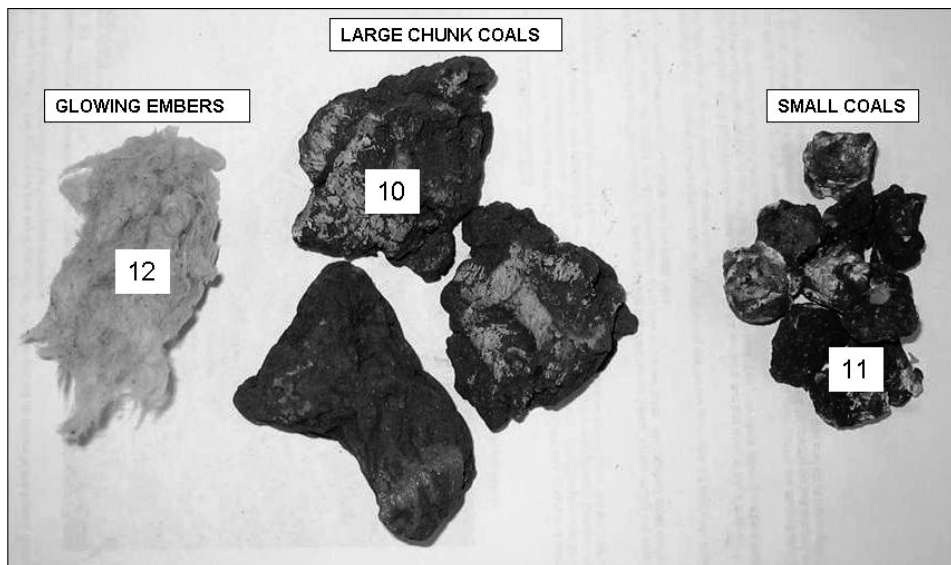
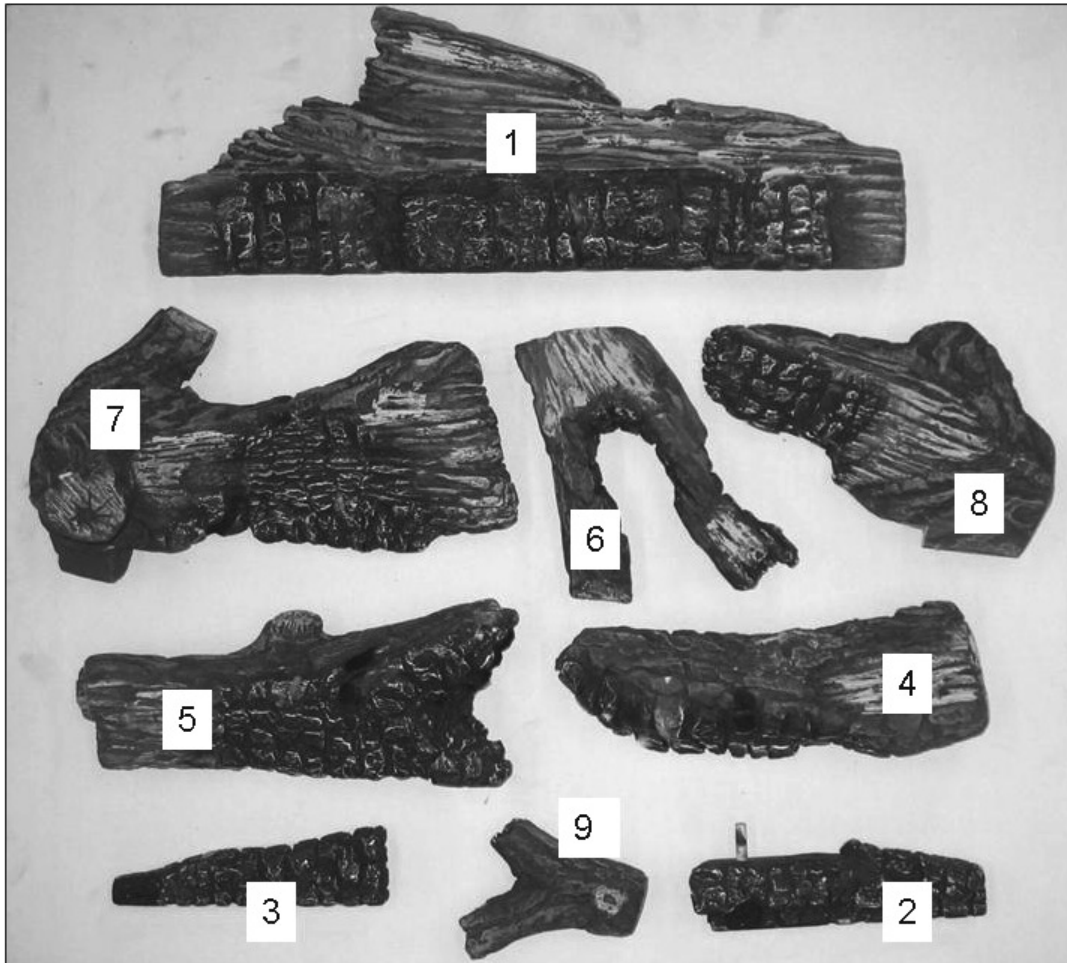


## M-50 LOG SET INSTALLATION INSTRUCTIONS

6. Cut the clear tapes and outer plastic wrap using a sharp utility knife or equivalent. Locate the 2 bags of coals, glowing embers and the log pieces. Identify each log piece numbered 1 through 7 and the Large Chunk coals (H), Small coals (I) and Glowing Embers (J) per the diagram show on this page.

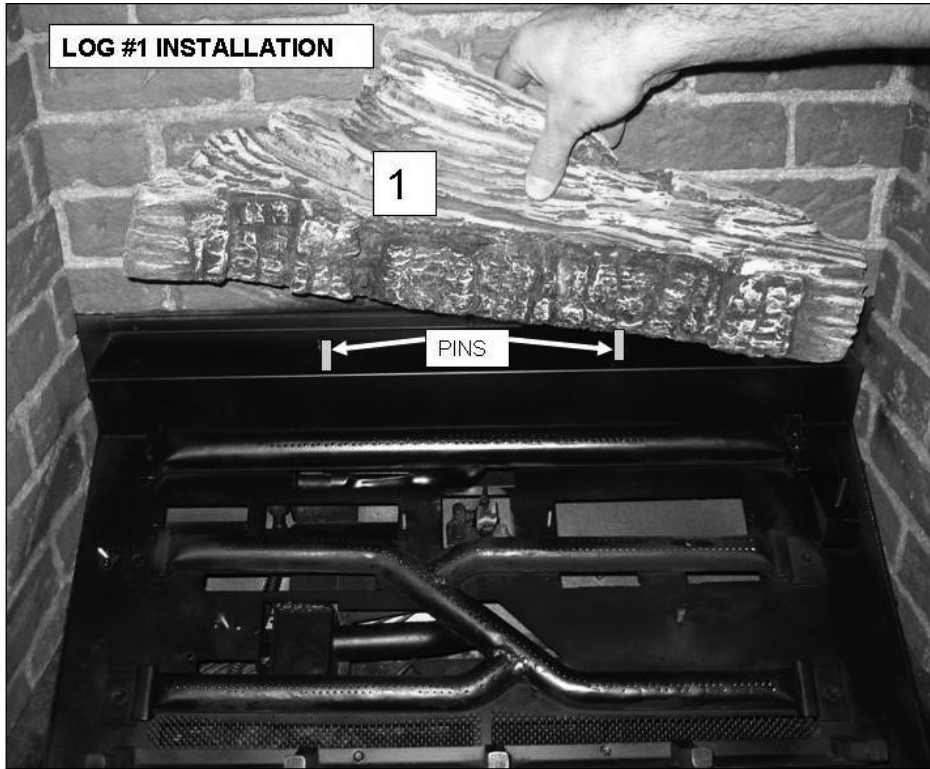
**CAUTION: LOGS ARE FRAGILE, HANDLE LOG PIECES WITH CARE.**

### **M50 LOG SET PARTS IDENTIFICATION DIAGRAM**



FOLLOW EACH STEP DEPICTED IN THE FOLLOWING DIAGRAMS TO INSTALL THE LOG SET.

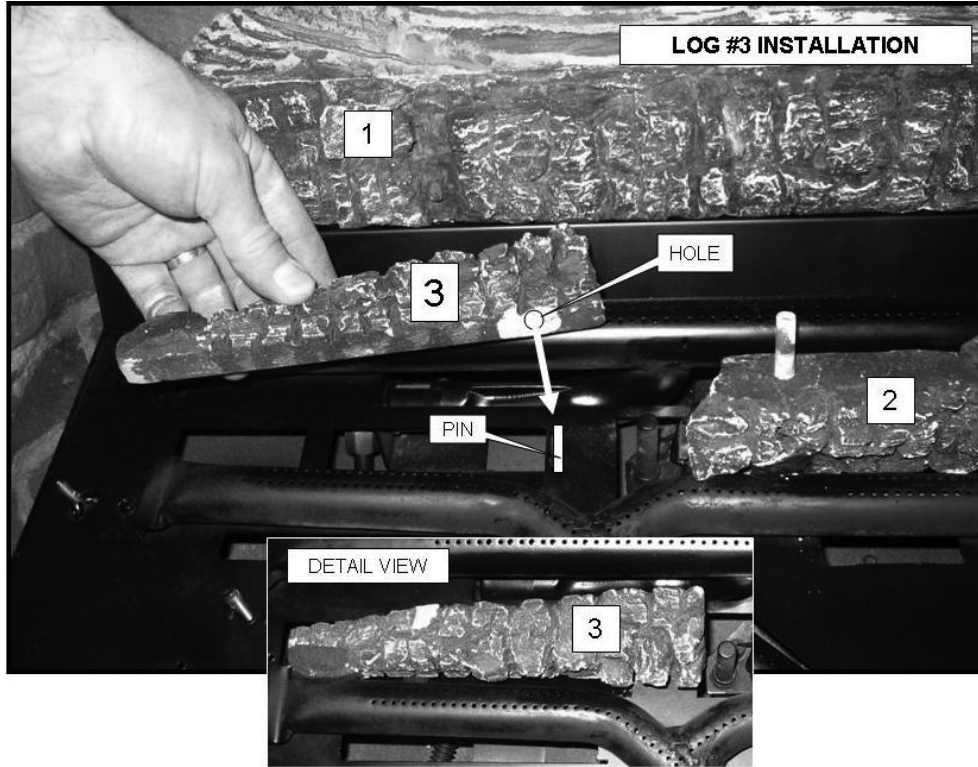
1. Identify two  $\frac{1}{4}$ " diameter Pins located on the top-most shelf of the burner airbox. Identify two holes located in the base surface of Log #1. Align holes in log with pins on the top-most shelf and set the log on that shelf.



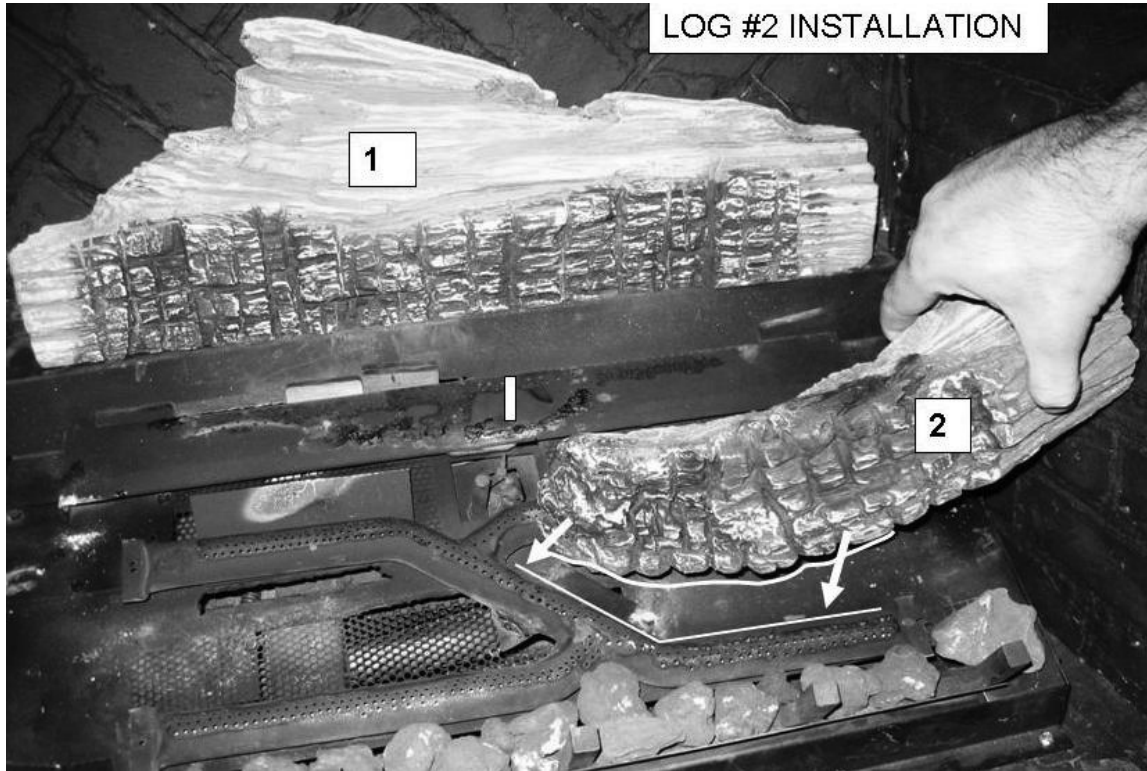
2. Identify Log #2. Log #2 installs between the rear burner and the middle burner, on the right side. Locate the hole in the base of Log #2. This hole aligns with a stud located to the right of the pilot light assembly. Set Log #2 as shown in the diagram, below, against the middle burner.



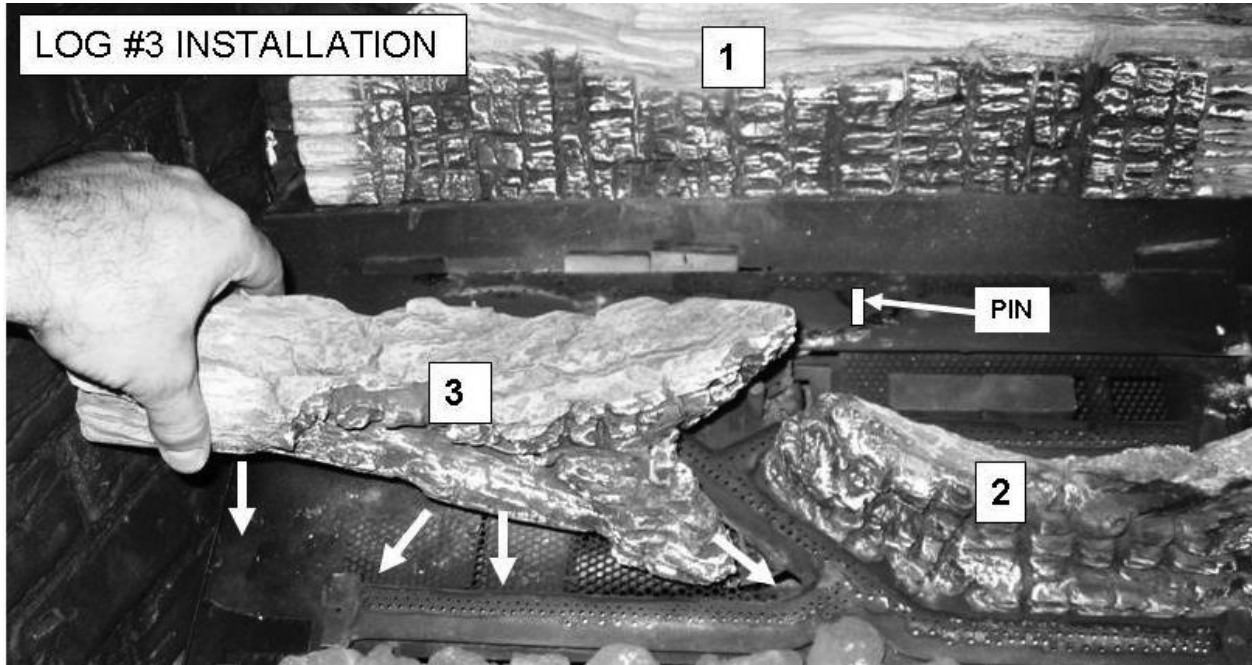
3. Identify Log #3. Locate the hole in the base of Log #3. This hole aligns with a stud located to the left of the pilot light assembly. Set Log #3 as shown in the diagram, below, against the middle burner and adjacent to the pilot light's Thermopile. Allow a 1/4" gap between right edge of Log #3 and the thermopile body.



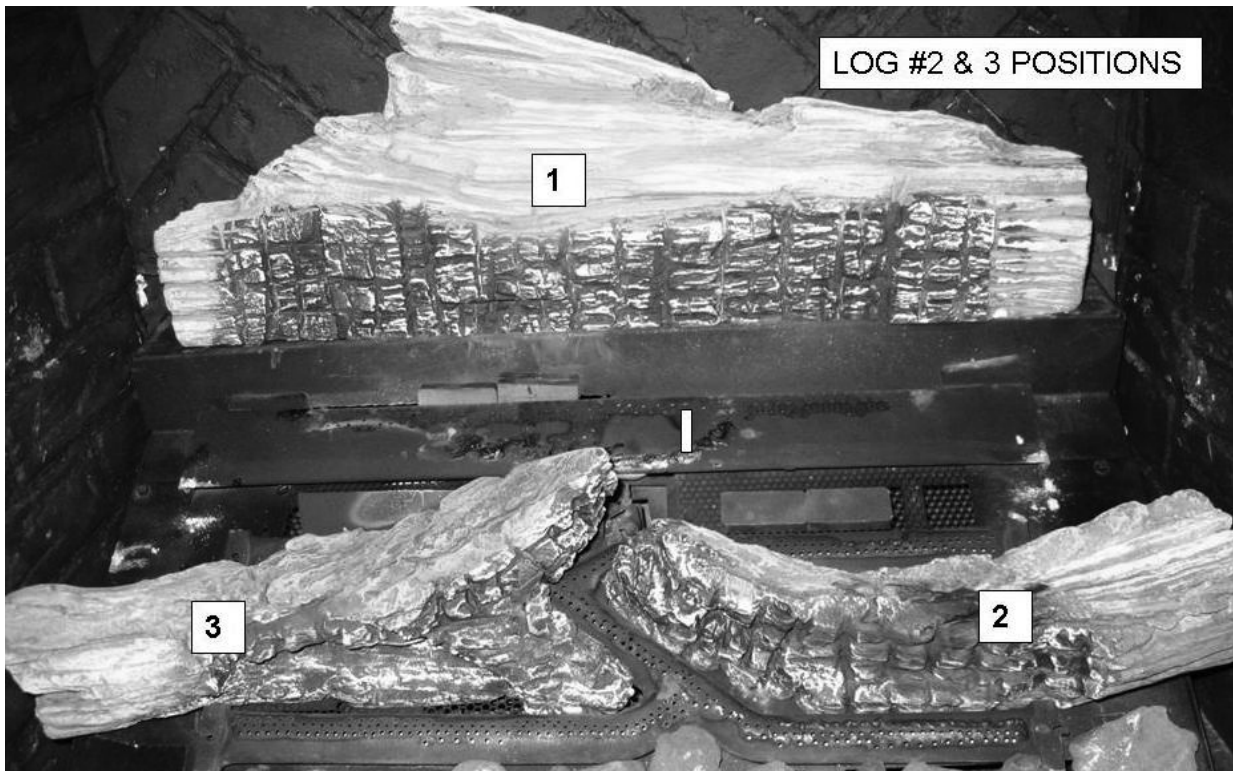
2. Identify Log #2 and the 1/4" Pin Located on the right side between the middle and front burner legs. Log #2 has a hole in its base surface. Align this hole with the pin and set Log #2 between the middle and front burner legs as shown in the diagram, below.



3. Identify Log #3 and the 1/4" Pin Located on the left side between the middle and front burner legs. Log #3 has a hole in its base surface. Align this hole with the pin and set Log #3 between the middle and front burner legs as shown in the diagram, below.

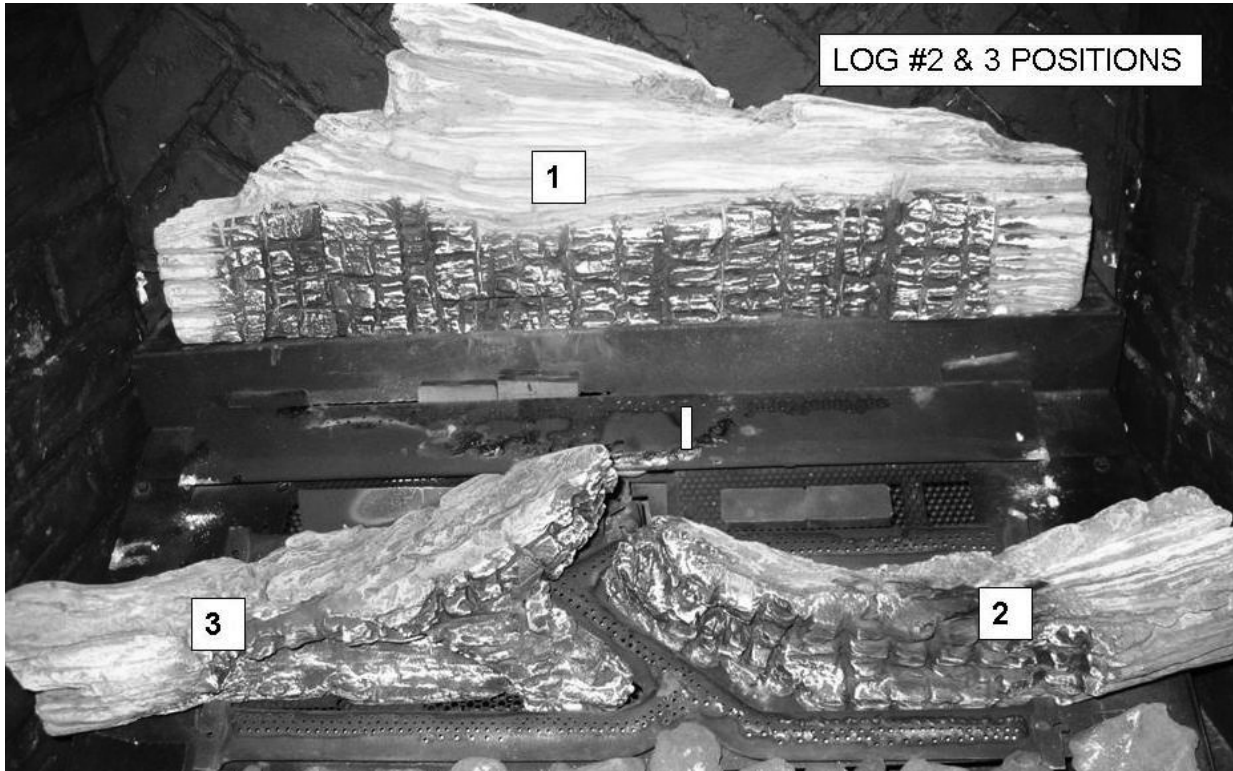


4. See Figure, below. Logs #1, #2 and #3 should be located as shown in this diagram relative to the burner legs.

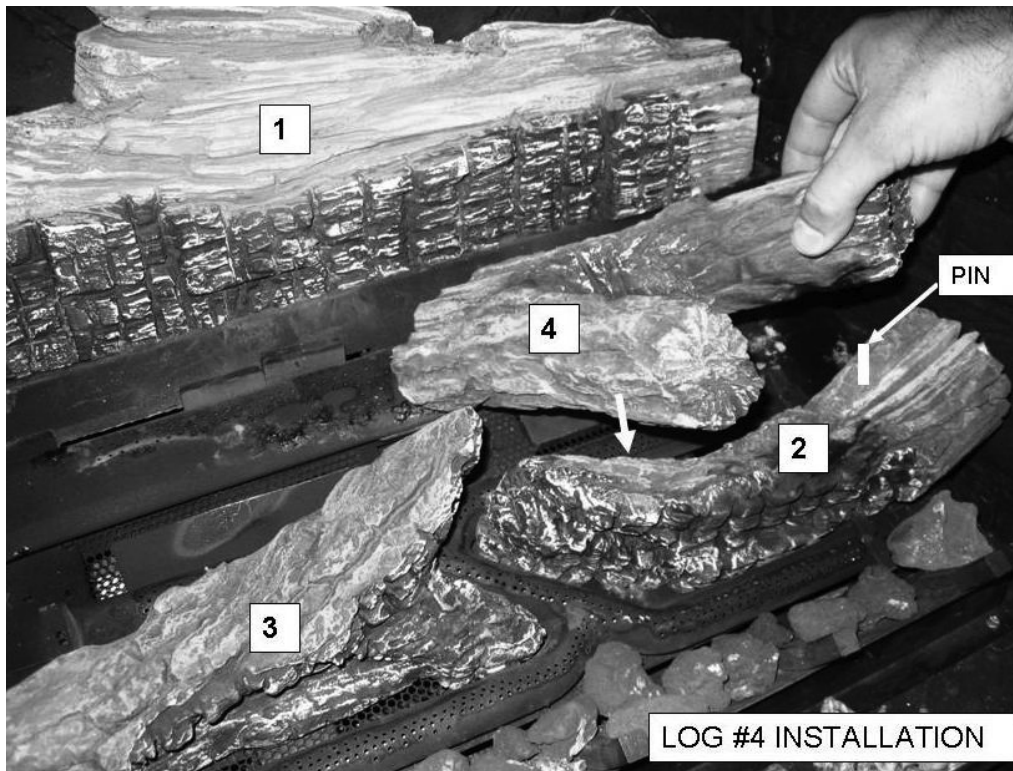




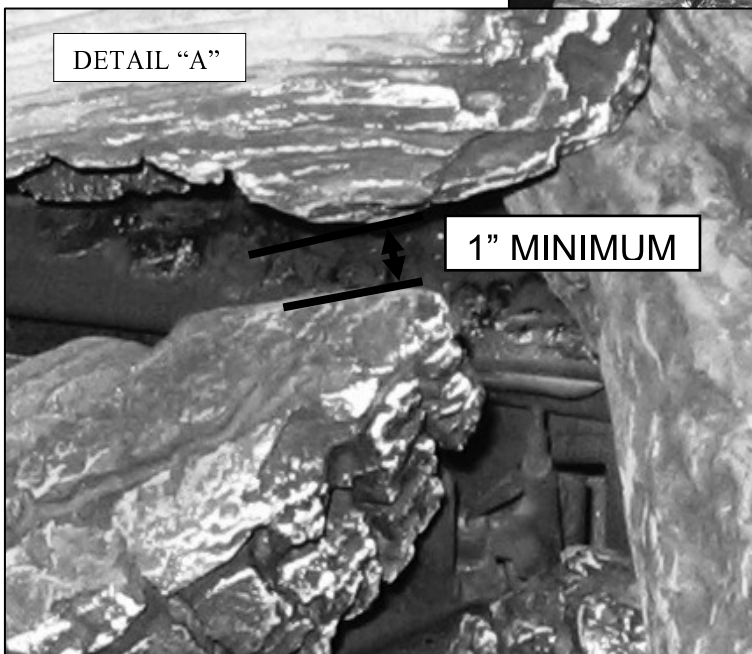
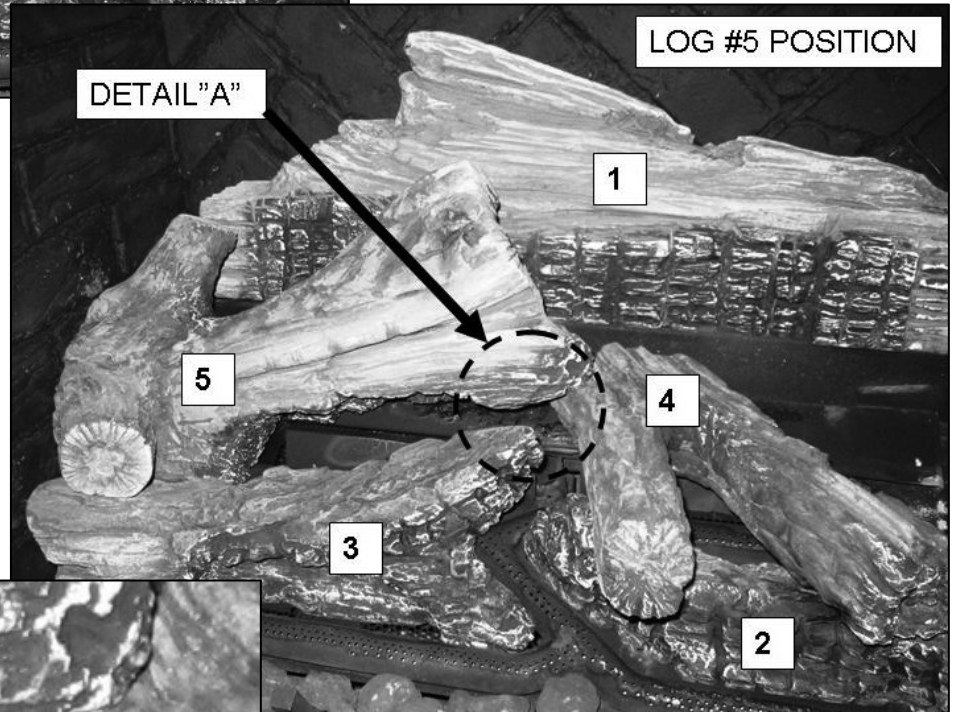
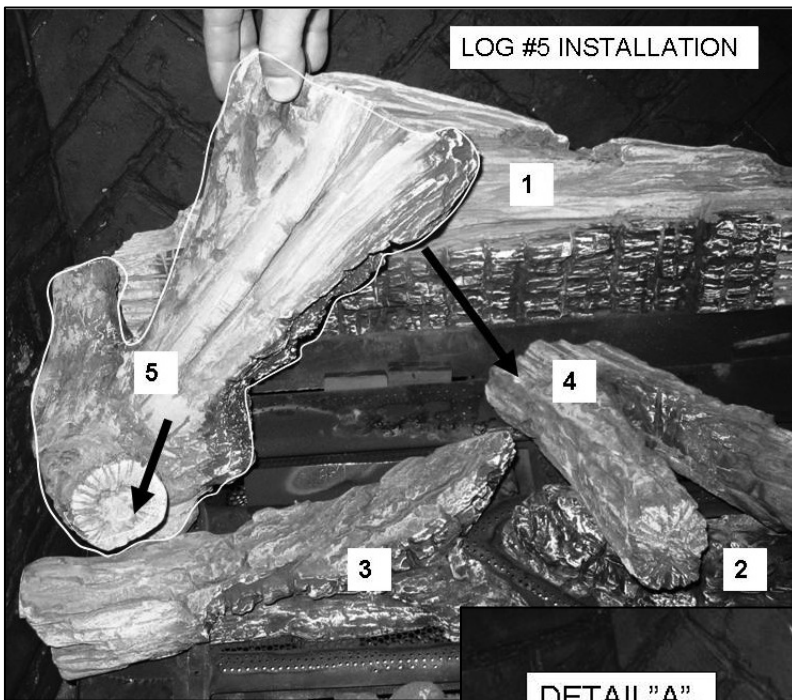
5. Identify the ¼" Pins located on the top surface of the Rear Burner and on the top surface of Log #2.



6. Log #4 has two holes in its base surface. Align corresponding holes and pins per diagrams in this page and set log #4 on top of Rear Burner and cross over Log #2.

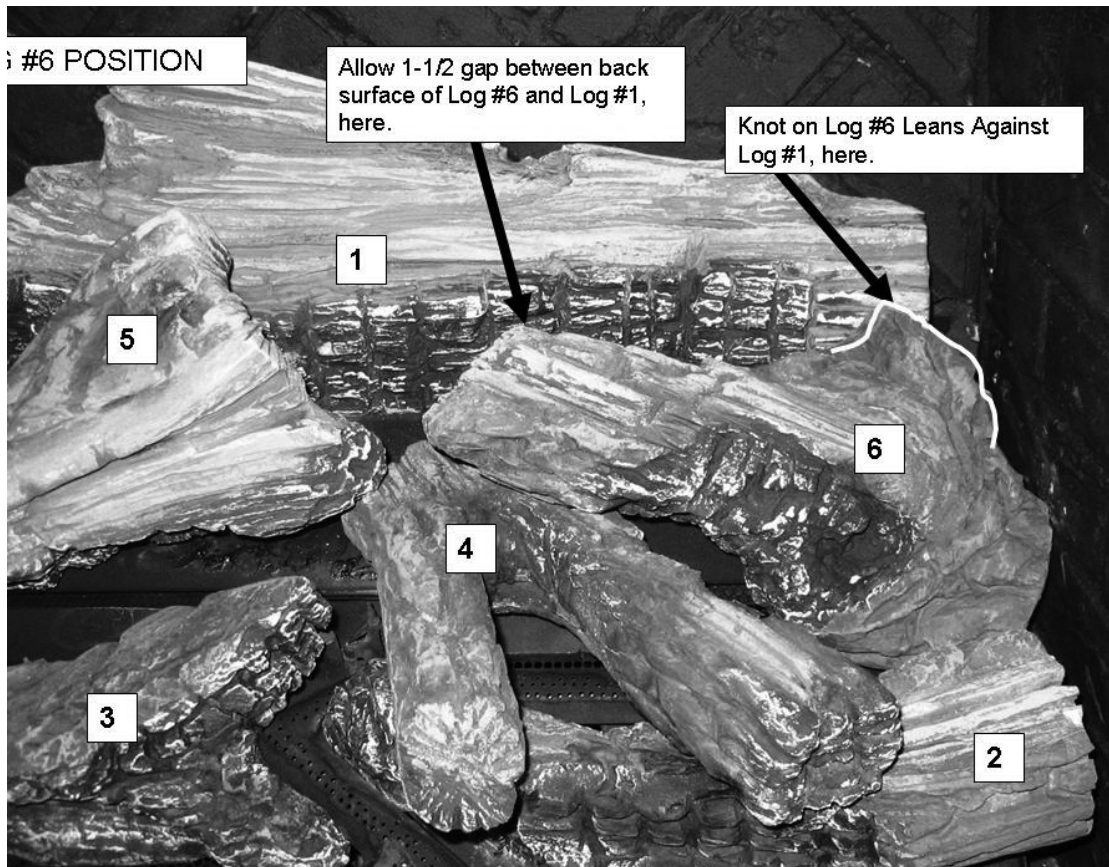
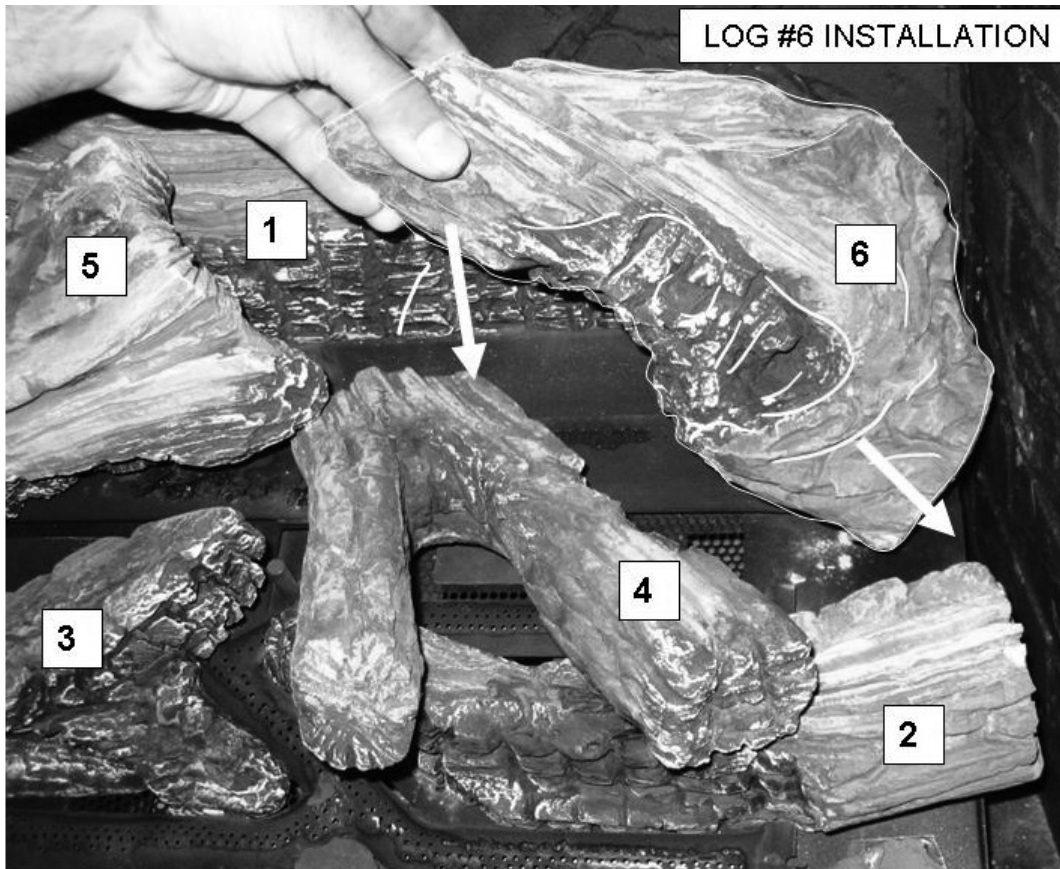


7. Log #5 should be placed by first setting its left end behind Log #3. The small branch on Log #5 will rest against Log #3.



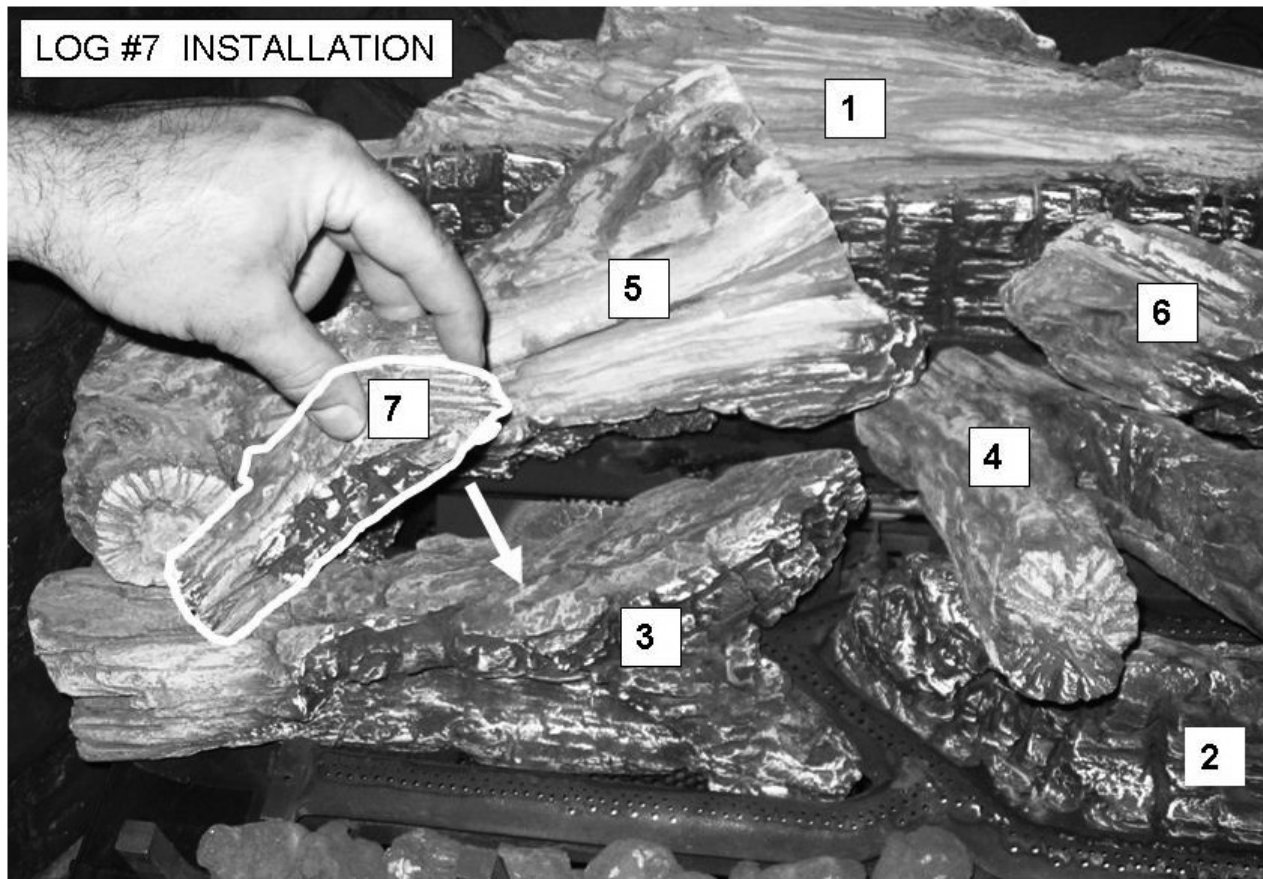
8. See Detail "A" in the Figure to the left. Maintain a 1" Gap between the front tip of Log #5 and Log #3.

9. Log #6 sits in the right corner inside the cavity created by Log #1, Log #2 and Log #4. Place the Right Bottom corner of Log #6 behind middle burner tube leg and in front of rear burner leg. The Left End of Log #6 sits on top of Log #4. The Knot on the right top of Log #6 leans against Log #1. Make certain that there is a minimum 3/4" gap between Rear Surface of Log #6 and Front Surface of Log #1 to allow flames to travel between these two logs.





10. Log #7 Sits on top of Log #3. The position of this log is not critical. Position this log as shown in the figures, below. Small variations in its position will not affect the flame characteristics.



11. When all log pieces are placed in the proper locations, the completed log set shall look as shown, below.

### **ADDING COALS AND GLOWING EMBERS**

Add Large Chunk Coals (8) in front and on top of front burner. Space them apart about ¼ inches side to side and bridge coals across the front burner in random locations. The coals should not plug any burner ports. This also provides for a cove under each coal that will glow red and create an attractive ember bed effect. If you provide large gaps between the large chunk coals and leave the gaps open, the front burner flames will yield random yellow flames along the front edge and between the coal pieces.

Spread small coals (9) on top of Large Chunk Coals to build up and hide the front burner tubes. When adding the small coals, space them ½ inches apart, left to right, to allow combustion air to flow to burner ports. Also spread small coals, randomly, on the floor between the firebox front edge and the grate bars.

Avoid packing small coals tightly. Doing so blocks combustion air from reaching the burner ports and will only yield blue front flames and red glow effects. Some sooting may also occur.

Loosely spread Glowing embers (Rock Wool) over the coals and the front burner tube and any area of the X-shaped burner tube. Loosely spread glowing embers on top of Rear Burner's Flat Surface. You may place glowing embers loosely on top of burner ports. Do not pack tightly on top of burner ports.

Do not use large and dense amounts of glowing embers in any area over burner ports. If taller flames are desired along front burner or rear burner, add thin layers of glowing embers over burner ports in that area. If sooting occurs around areas where coals or glowing embers are located, remove and allow more room in that area for gas and air to mix together properly.